

THE BATHING PLACE



Pountney Street, Wolverhampton, WV2 4HX ☎ 01902 450550
email:sales@thebathingplace.com www.thebathingplace.com

Roman Steam Room Assembly

We recommend that the steam room is installed by a competent tradesperson who is suitably qualified to make plumbing and electrical connections – we do not consider this to be a DIY project.

Before you can begin assembly you will need to prepare a suitable floor that is flat and level around the perimeter and drains to the centre to take away the condensate. This floor must be impervious to water and should fall to the drain with a slope of at least 1 in 100. Test the floor before assembling the steam room.

You will also need an exhaust vent normally to an outside wall or a wet area such as a pool hall etc.

You will require a mains power connection for the transformer for the low voltage lights.

You will need to access all of the outside faces during assembly but once the steam room is assembled it can be manoeuvred into the final position – you should consider access for servicing when deciding how to finish off the exterior. Sealing the steam room behind block walls will make any subsequent service access difficult and expensive.

We recommend that 2 people carry out the assembly. To some extent the order of work will be determined by the space available to work in, for example if space allows the roof can be assembled in one piece on the floor and then lifted into position on the walls but if there is not enough space you will need a ladder to complete the assembly in situ on the walls.

Steam inlet nozzle depending on the model you have chosen you will need to decide where to position the steam inlet nozzle and to make allowances during the assembly procedure for attaching the steam inlet pipe to the nozzle and similarly for any controls – see the instructions supplied with the steam generator.

General

To make the assembly you will require a powered drill with a 9mm and 3mm bit some clamps and suitable size spanners for tightening the nuts and bolts and a silicon sealant applicator.

To allow for distortion within the mouldings the order of assembly is as follows:-

Loosely assemble the walls with a small number of nuts and bolts.

Insert the door and frame using a small number of self tapping screws.

Loosely assemble the roof with a small number of nuts and bolts.

Loosely attach the roof to the walls and align and make an initial fix with a small number of nuts and bolts

Add further nuts and bolts to roof section joints; add further nuts and bolts to fasten the roof to the walls.

Add further nuts and bolts to the wall and door section joints

Inject silicon sealant between all the flanges of all the joints

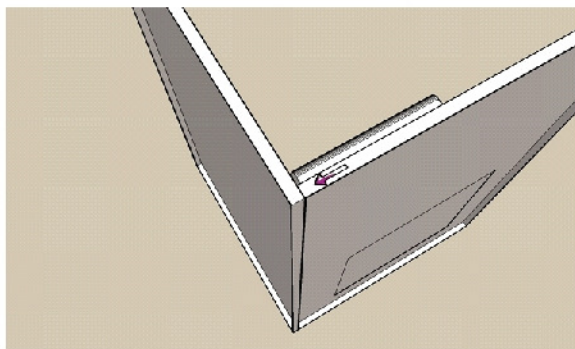
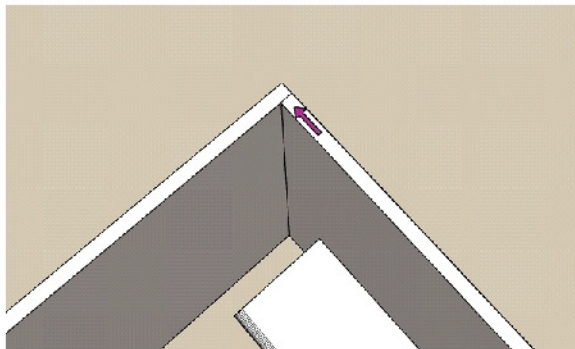
Fully tighten (do not over tighten!!) all the nuts and bolts

Apply a good bead of silicon sealant to the inside face of all of the joints and wipe to a smooth finish.

FOR DELUXE SHOWER AND LIGHT FITTING PLEASE FIND INSTRUCTIONS ON PAGE 8 (Please note it may be a good idea to pre install the shower kit on the panel before constructing the room, this is obviously dependant on space)

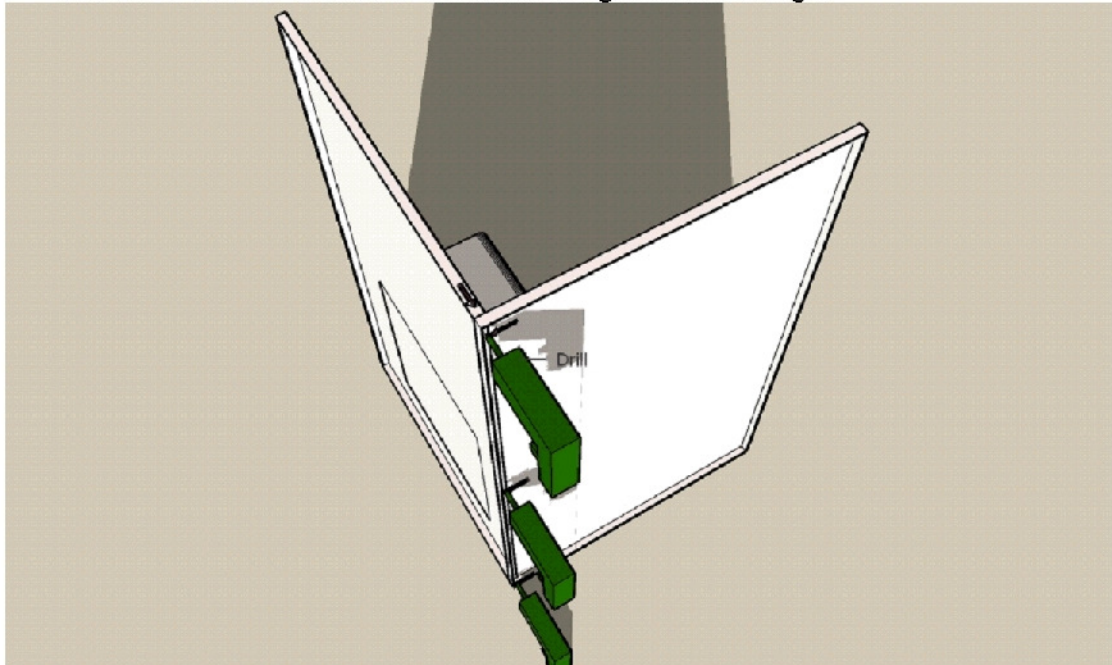
Assembly Procedure

- 1) Start with the corners first, take a flat panel and a seat panel and hold them at 90° using clamps with the smooth faces inwards as shown in the picture below. (This a view from the inside of the right corner)



This is a rear view of the left corner for how the seat panel should join the flat panel.

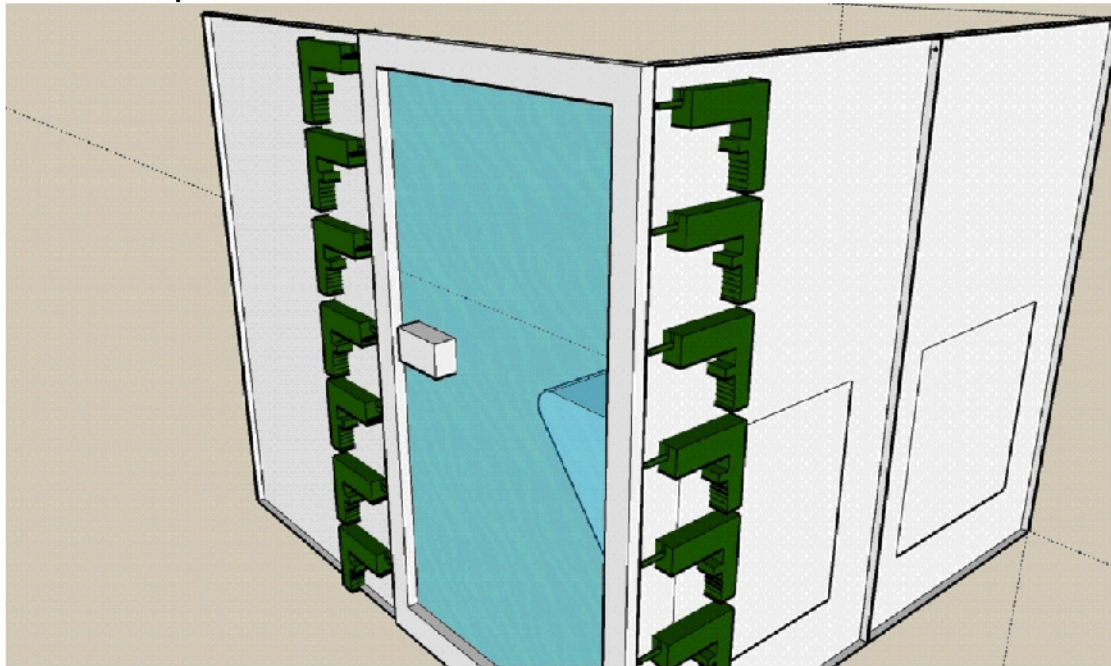
- 2) Drill 9 mm diameter holes at the top, centre and bottom where the panels overlap as shown in the picture below, then attach together with bolts and two washers one either side of the bolt. Do not tighten at this stage.



- 3) Do the same with each corner (For Deluxe models you only need to make two corners) remembering to use clamps and making sure the seat panels and flat panels overlap correctly; this should become clear when attempted.
(For steam rooms bigger than three seats jump to point 6)
- 4) For a two-seat steam room you will need to make three corners, two left and one right, for the 3 seat room you will need to make two corners because one corner is already moulded. For the corner seat attach between the two other seats and with clamps then drill three holes similarly to how is shown in the picture for point 7 and fix with bolts as shown before.
(This is the three seat model)



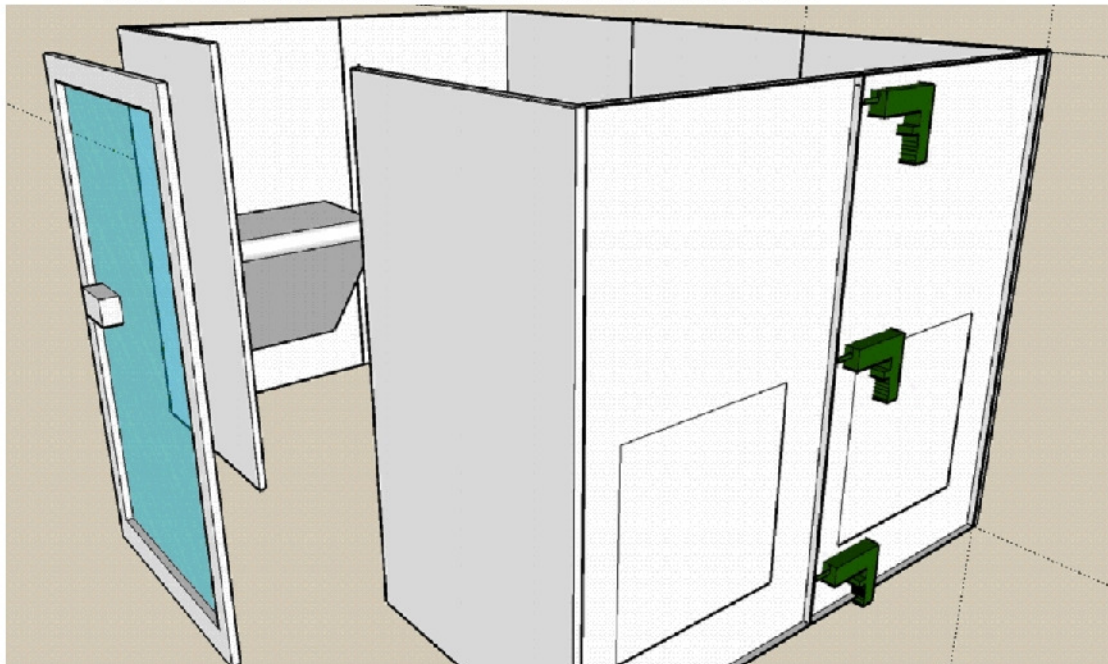
- 5) Now for the door using the 3mm bit, drill at the least 6 holes as shown in the picture below using clamps to hold in place and using self-tapping screws to fix in place:



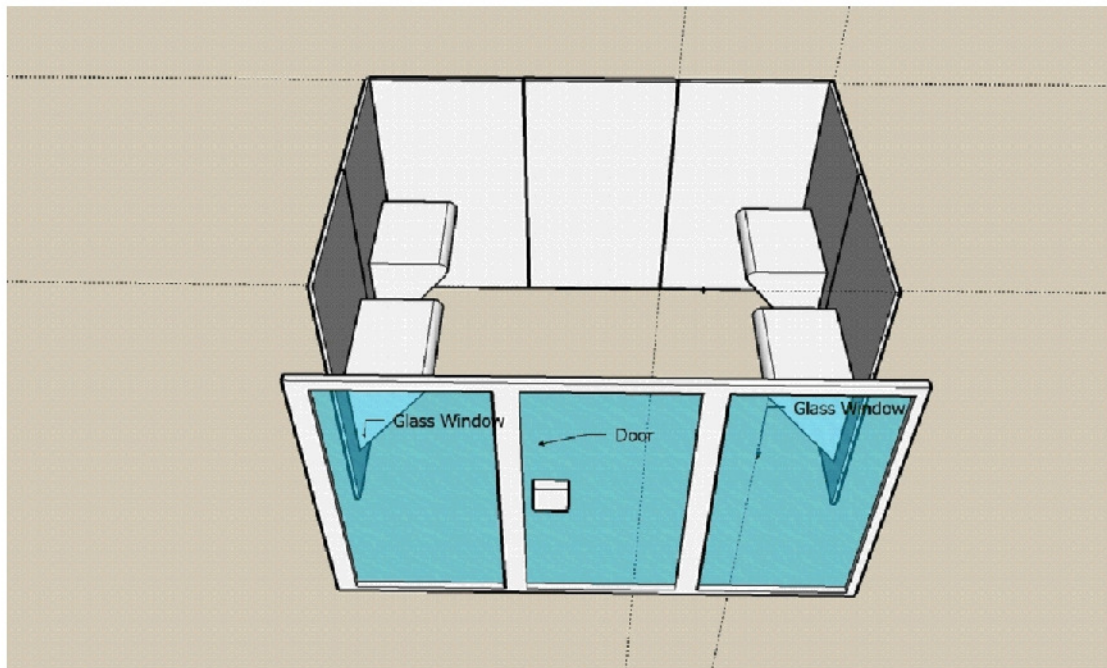
- 6) Now to make the back, with the remaining flat panel clamp it between the two flat corner panels as shown in the picture below, drill and attach as before:



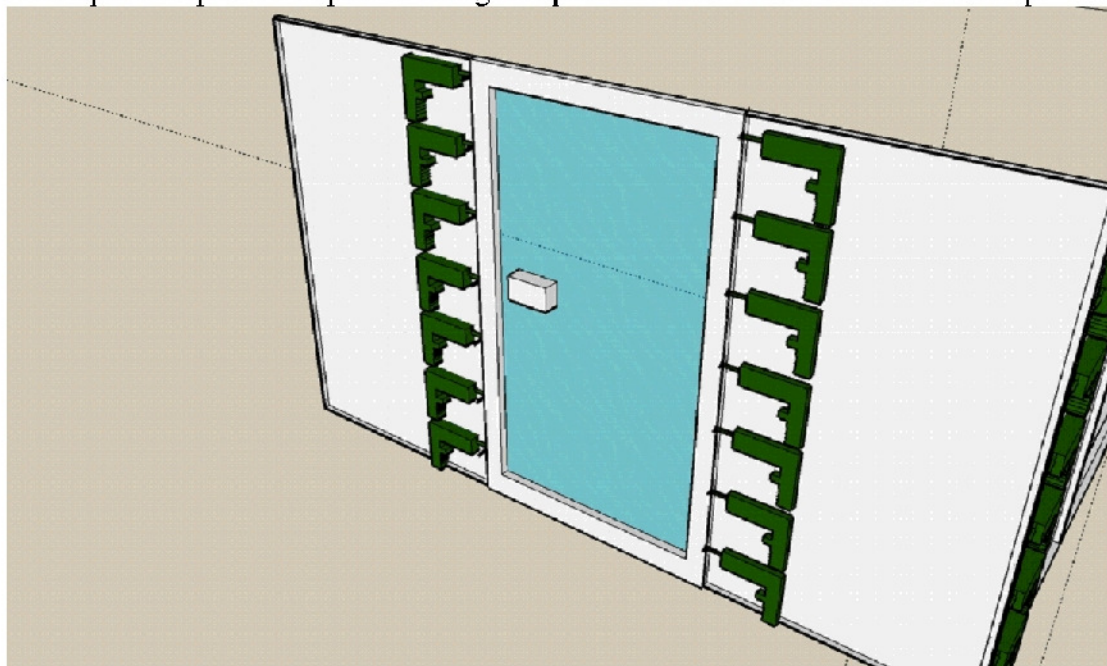
- 7) For the standard model (4seat) join the seat panels together parallel to each other with the same number on each side. As shown below

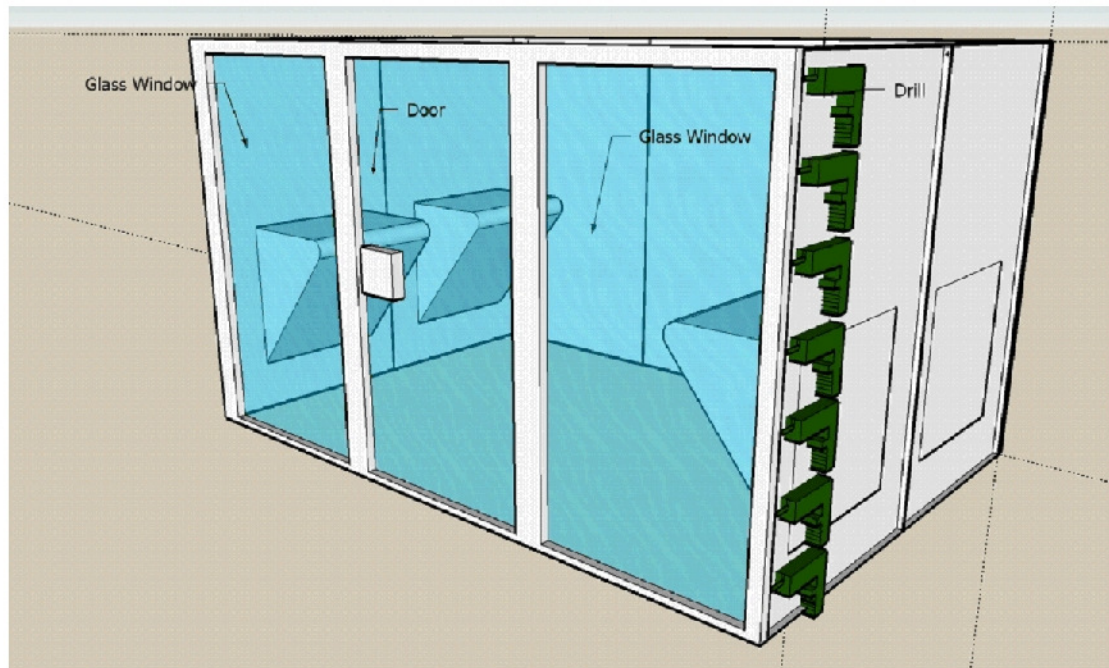


- 8) For the deluxe model you will need to attach the seat panels as shown below using the same technique as point 6 and 7:



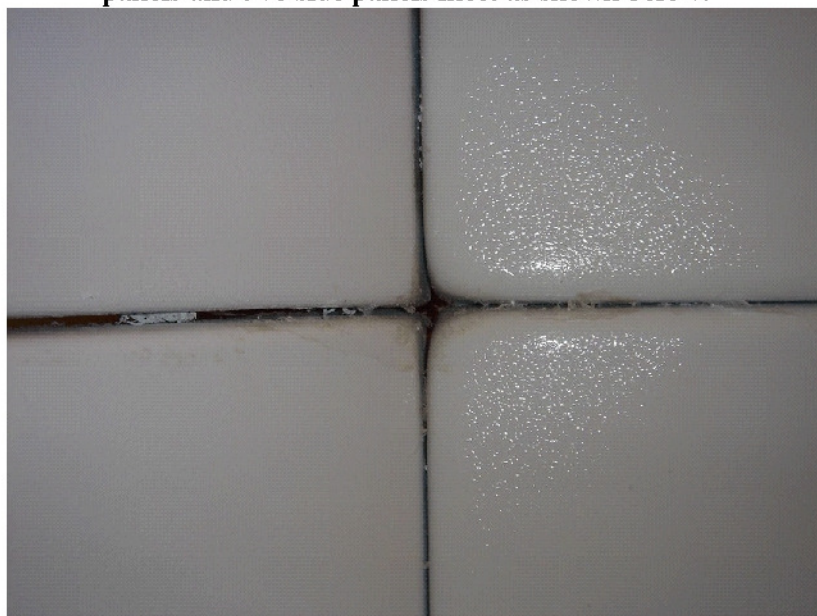
When attaching the door for the standard or deluxe (4seat or more) use the same technique as explained in point 5 using that photo or either of the two below to help:



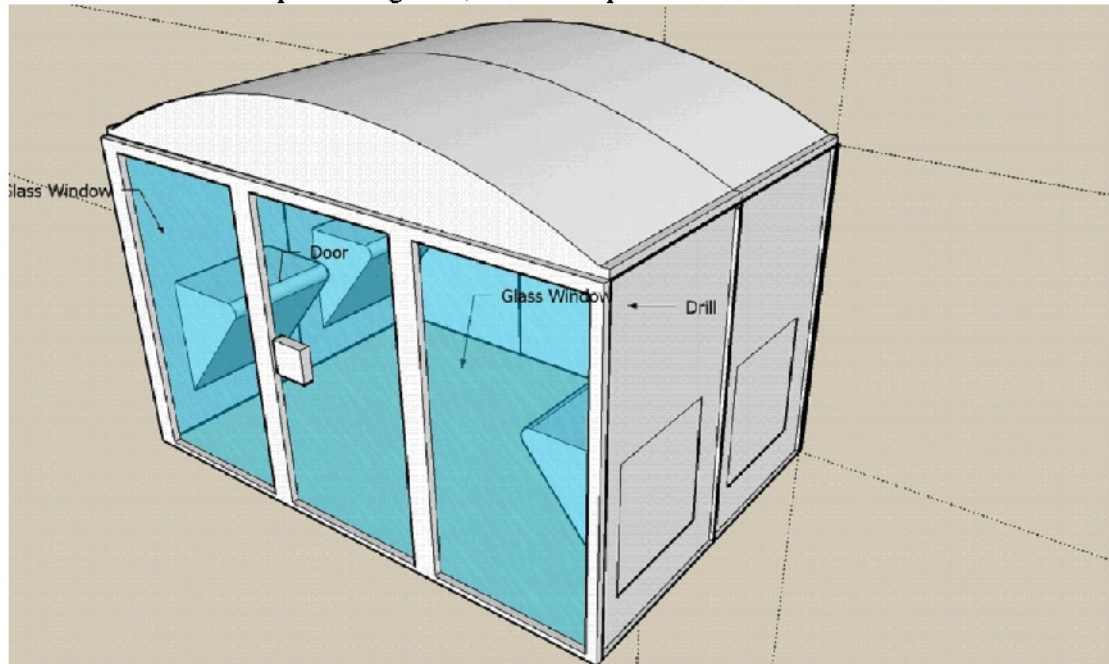


- 9) For two or three seat steam rooms place the single piece roof on top, when you are happy with the alignment clamp down and drill holes with 9mm bit and fix with the same technique as before, use a small number of fixings to begin F.G corners then add more till you are satisfied with the strength we recommend at least six holes along each of two sides.

- 10) For Standard or Deluxe with four or more seats place the roof panels on top of the walls, align and clamp in place, try to make crosses where the two roof panels and two side panels meet as shown below:



Now drill three holes to attach the wall and roof for each panel on each side and six or more to hold the roof panels together, when complete it should look like this:



(This is a completed Deluxe Steam Room)

- 11) When the assembly is complete to this stage you can begin adding additional fixings to all the joints but still do not fully tighten the nuts and bolts. When all the fixings have been made inject a bead of silicon between the flanges of each of the joints and then firmly tighten but **DO NOT OVERTIGHTEN AS THIS MAY SPLIT THE MPC.**

Once the steam room is fully assembled it can be manoeuvred into its final position and according to the access which is available a number of front and side wall panels can be fixed to the floor using rawl bolts seal the base flanges to the floor with a good bead of silicon and wipe smooth.

Installing the deluxe shower with thermostatic mixer, jets and overhead rain shower.

Tools needed: 22mm and 36mm Hole Saws, Drill, Spirit Level, Pencil, Tape Measure.

Important Information:

The shower will work on $\frac{3}{4}$ of a bar pressure but for a powerful shower you will need around 1 – 2 bar.

If the pressure is over 4 bar a pressure-reducing valve should be installed on the water line.

For the thermostatic valve to work accurately there should be equal pressure should be across hot and cold.

- 1) Calculate the height at which you want to place the jets in relation to user(s) a normal layout is shown in the picture below:



- 2) Then choose the three heights you want using the spirit level to keep them straight.
- 3) A good tip for marking up the jet holes is to decide how far in from the panel you want your jets then cut a piece of wood this length, you can then use this as a guide for each jet.

- 4) Take the main mixer and mark up where you want it, don't drill holes until everything is marked up.
- 5) Now choose where you want your hand rain, remember to take into consideration where the wall is, water in etc.
- 6) Now mark up where the connection for the hand shower will go, remember that the pipe will hang down and may obstruct the jets.
- 7) The last thing is the overhead shower, use a tape measure and find the exact centre of the roof.
- 8) When you are happy with the marking and it looks good proceed with the drilling below are the sizes of drill you need for each part:

For 22mm – Overhead shower, connection for hand held shower

For 36mm = Jets, Mixer

- 9) When holes are drilled use the fixing nuts on the front and back for the mixer.
- 10) In the pack of jets one of them will have a glued end to make a corner joint instead of a T. make sure to use this for the bottom jet (the last one to connect on the pipe line)
- 11) When tightening the jets don't over tighten the nuts as this may split the jets. Cut pieces of hose for each jet and for the pipe to hand held shower and overhead. Then use the jubilee clips to link up all the jets, start from the top jet and make a run from one jet horizontally across to the other jet then down and the same again then down same again and finish with the glued one way jet.
- 12) On the mixer tap there are three connections, the middle connection is for water to the generator, this valve is constantly open, if you don't need this block it off. The other two are hot and cold and are marked up H and C on the mixer.
- 13) When all connections are made test the shower for leaks.

12V Chromatherapy lights

Parts:

- 240 / 12V Transformer
- Chromatherapy lights
- White control box – usually attached to the lights

You will need a hole saw or a drill to cut holes at 25mm.

Start by testing the lights, link the transformer to the lights so that the 12V output connects to the white control box on the lights. Make sure to use the transformer in front of the control box or you will burn out the control.

Drill holes in your roof / wall / area where you want to install the lights, it is quite important to make sure you have access from above so you can connect all cables.

If you need your lights further apart use 4 core 0.5mm cable and connector blocks.

If you want a constant colour you can have Blue, Red or green, to do this you need to cut the wires you don't want and keep the black wire and the colour wire for the colour light you want. For example if you wanted just blue in the room you would cut the green and red cable and leave the black and blue cable.

Make the final service connections and your steam room is complete.

If you encounter any difficulty with this assembly procedure or think we could have explained anything more clearly we would welcome your comments; please ☎ 01902 871127 technical help line.