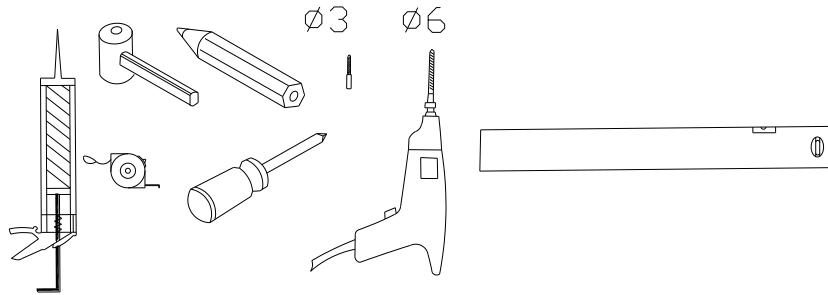


1900mm full glass front instructions

1. Mounting Preparation

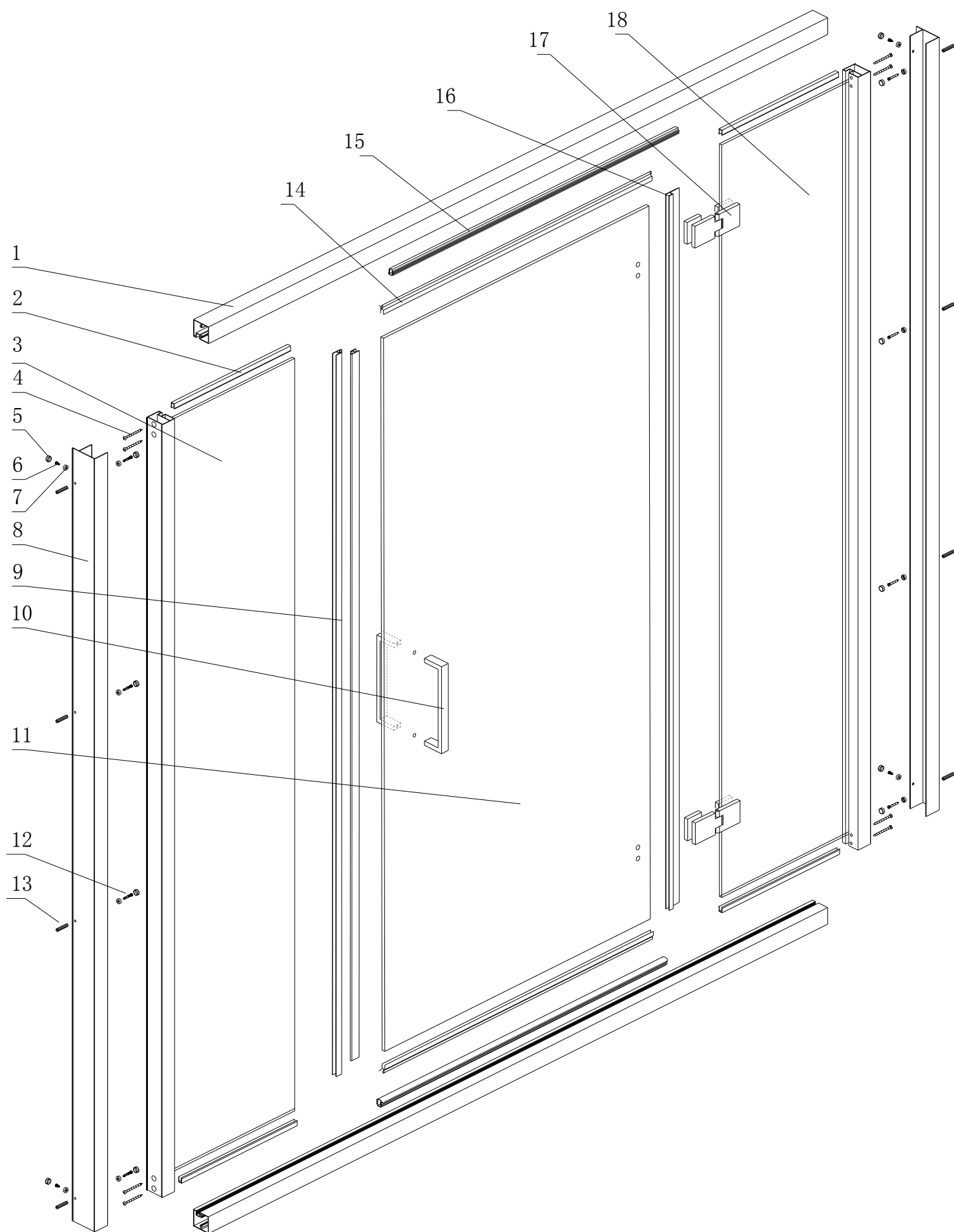
- 1.) After opening the case, read this instruction carefully, check all the packed parts, and examine the shower cabin for shipping damage. If there is any problem. Please contact the local seller or our company directly in time. You will get a satisfactory answer.
- 2.) Necessary tools: drilling machine, stone drill (D=6mm), meter stick, water level, pencil, screw driver, hammer



- 3.) With structured or imprinted glass make sure that the smooth side of the glass faces the inner side.

2. Packing list

- 1) rails (2pcs)
- 2) U size strips (4pcs)
- 3) fix doors (1pcs)
- 4) M4x40 screws (8pcs)
- 5) Screws cover (12pcs)
- 6) M4x8 screws (4pcs)
- 7) Screws cushion (12pcs)
- 8) wall connecting profiles (2pcs)
- 9) magnet strips (2pcs)
- 10) handle (1pcs)
- 11) doors (1pcs)
- 12) M4x30 screws (8pcs)
- 13) plugs (8pcs)
- 14) anti-water strips (2pcs)
- 15) fillseal strips (2pcs)
- 16) anti-water strips (1pcs)
- 17) hinges (2pcs)
- 18) fix doors (1pcs)



3. Mounting process

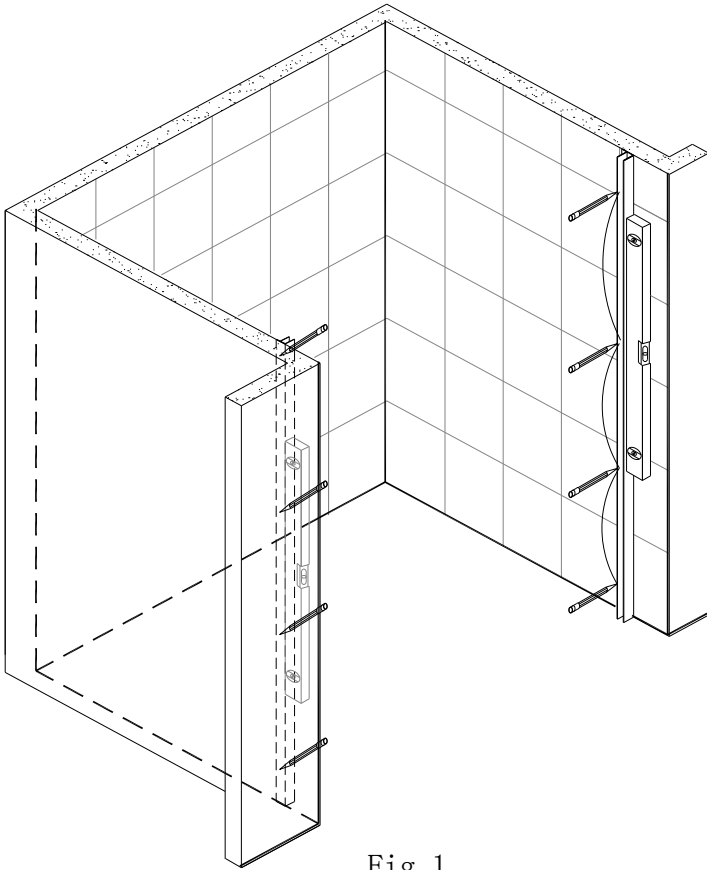


Fig. 1

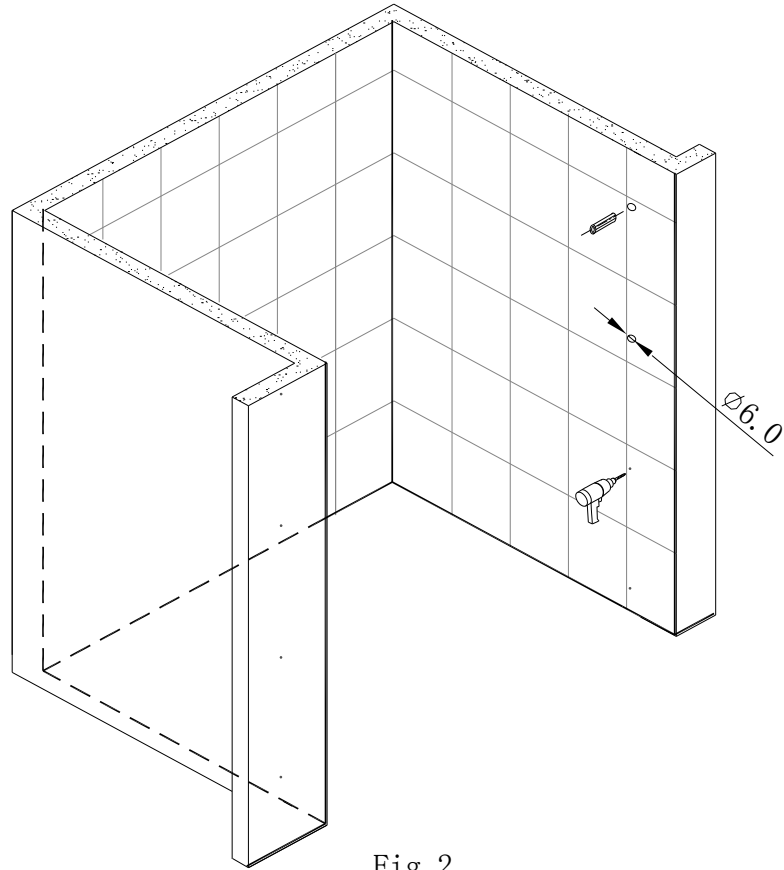


Fig. 2

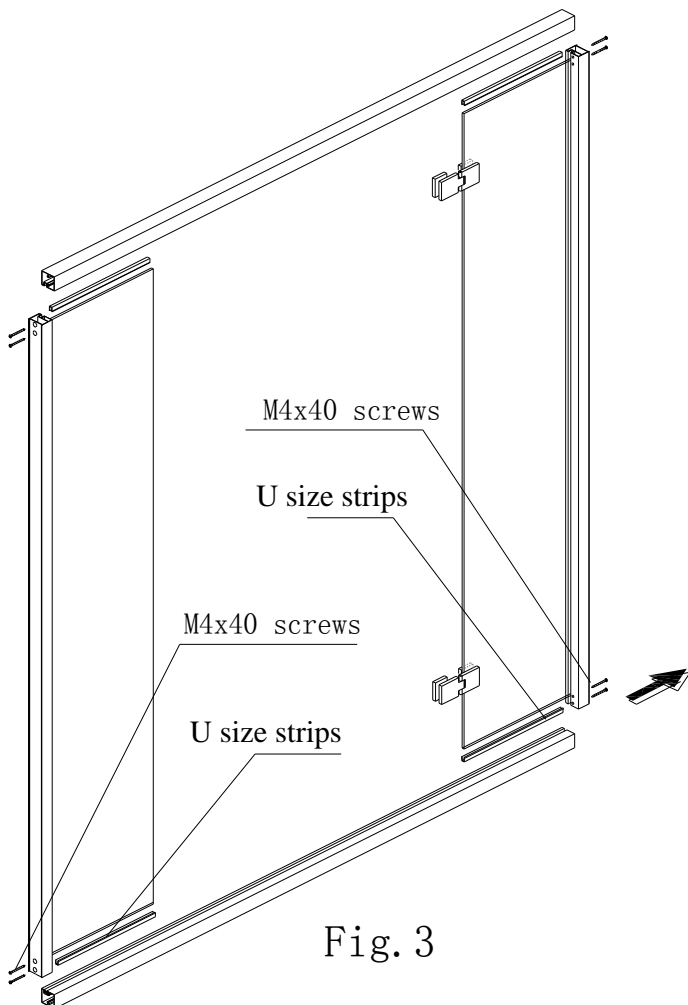


Fig. 3

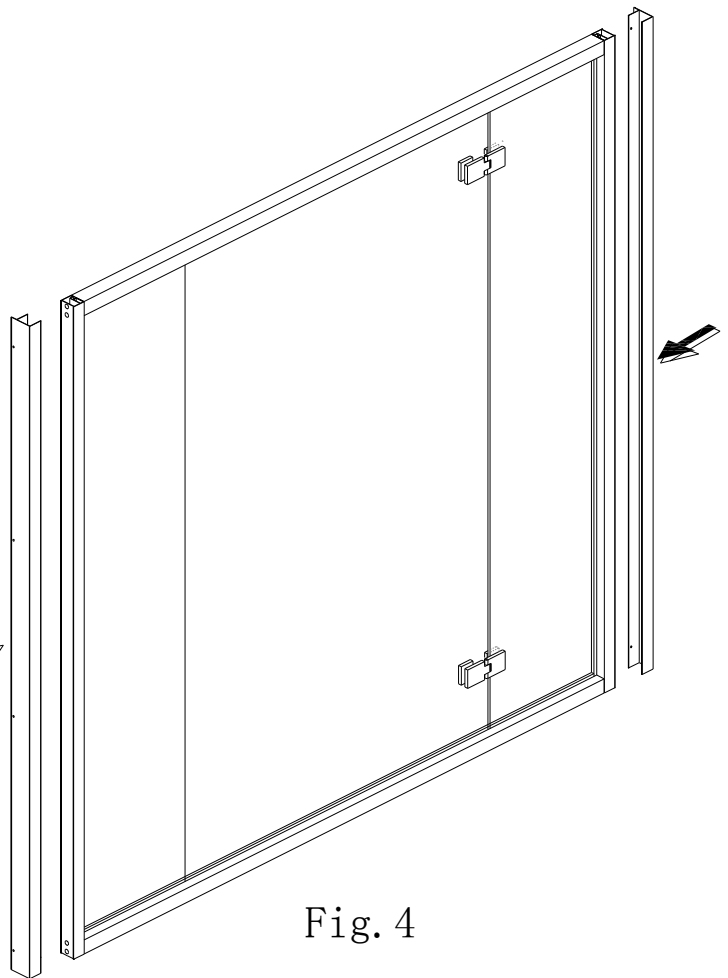


Fig. 4

