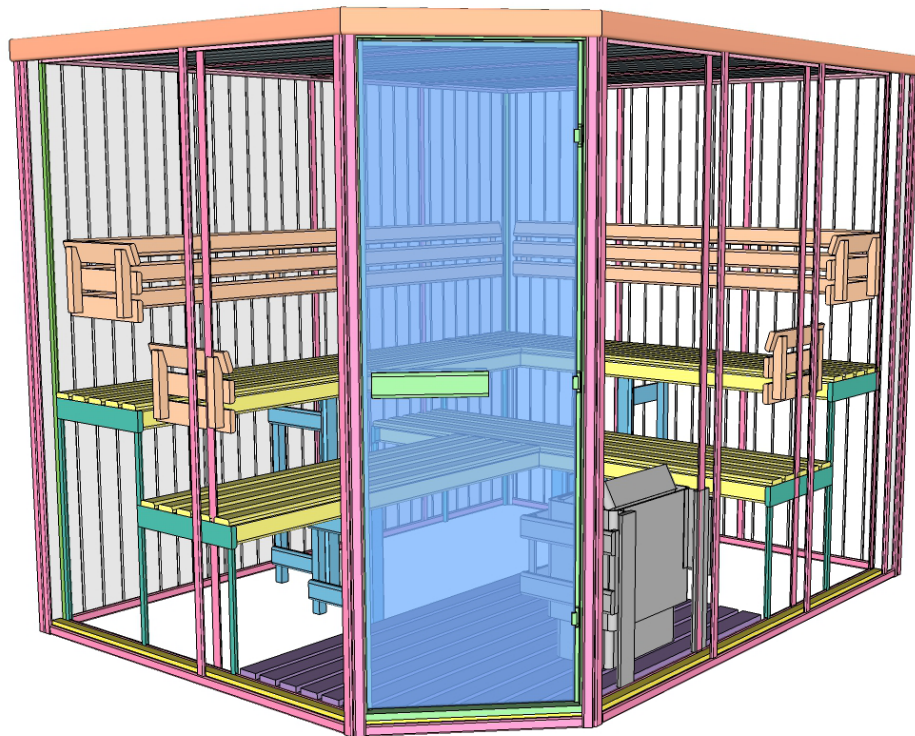


# Oceanic

## Sauna & Steam

### CORNER SAUNA (ADDITIONAL) INSTALLATION INSTRUCTION MANUAL

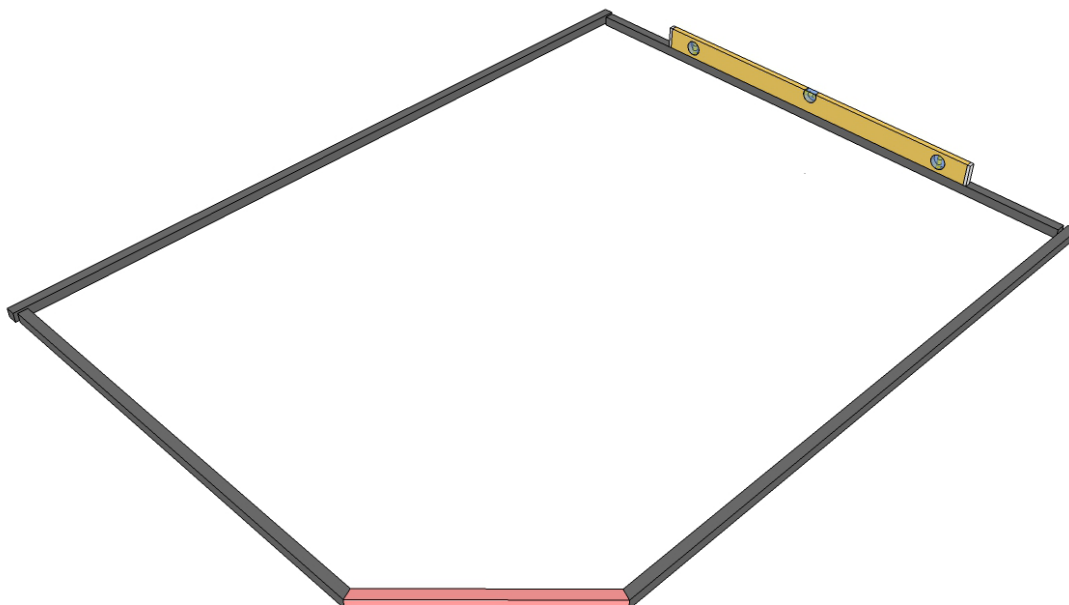
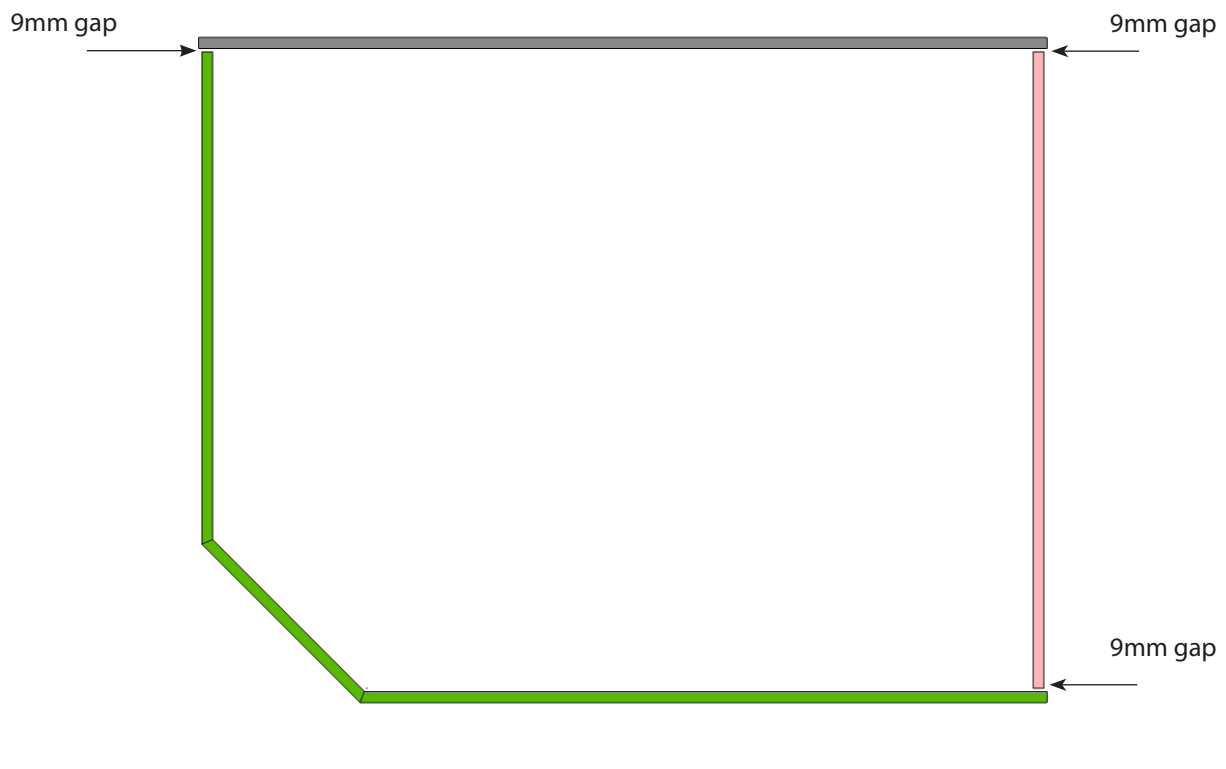


## Introduction

Please use this manual along with the traditional sauna manual. This manual shows specific methods that are different in the corner model than our standard saunas.

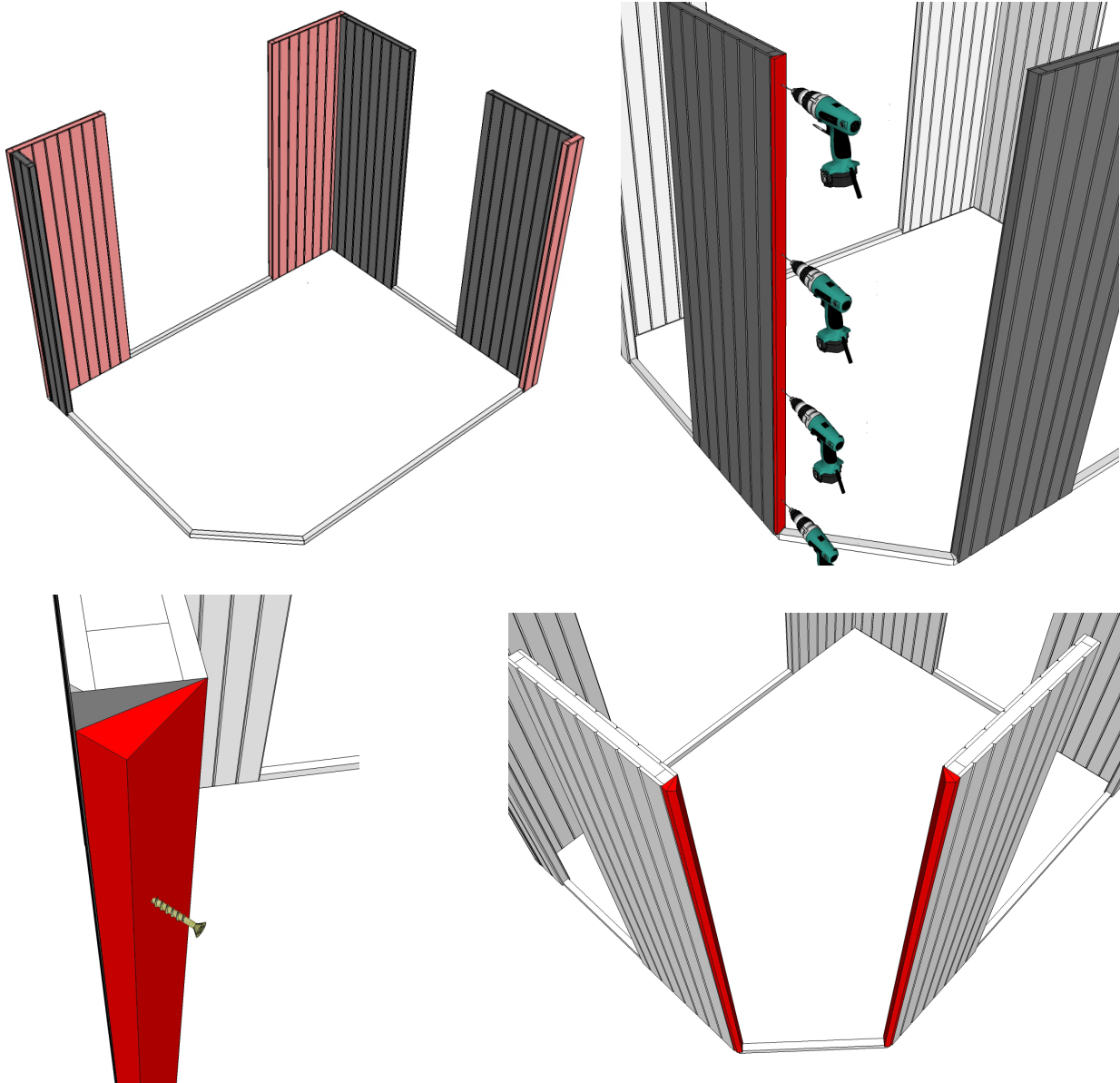
### 1. Base

- Build the base using drawing on the parts list.
- Do not fix the base together. There should be a 9mm gap at certain points. See example below.



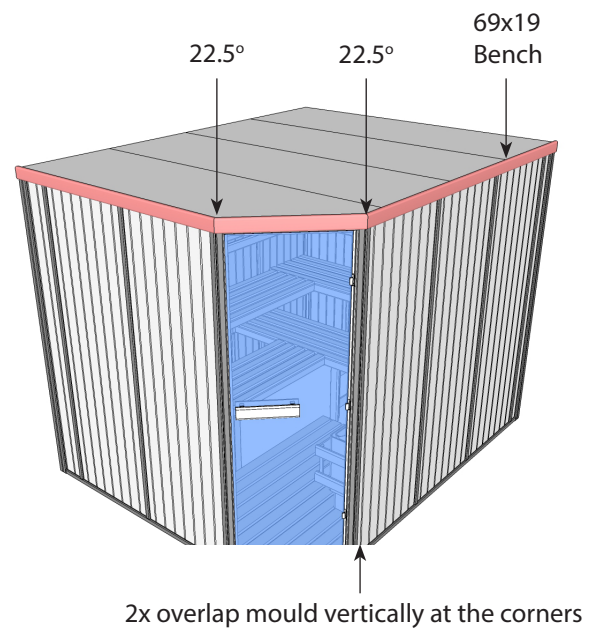
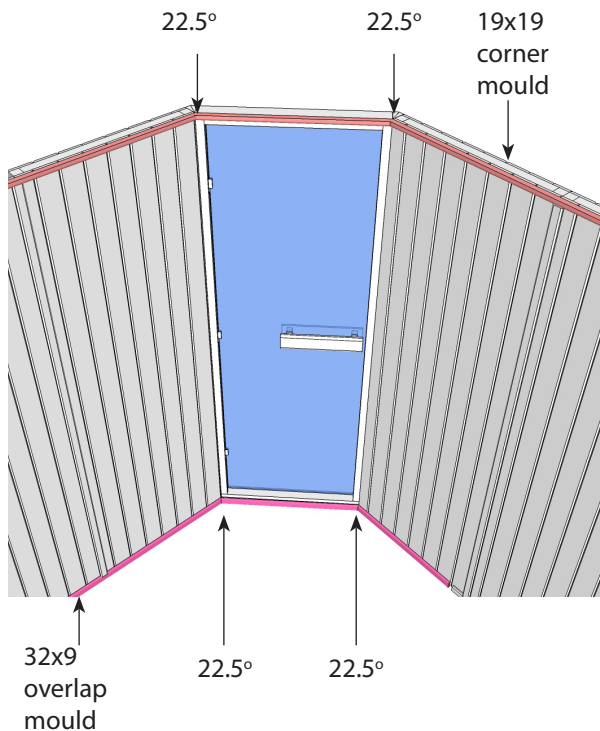
## 2. Wall Panels

- i. Build the three 90 degree corners as the standard manual shows.
- ii. For the 45 degree corners you will be supplied with two “angled columns”, these are fixed using 40mm screws into the end of the left wall panel and front wall panel.
- iii. Counter sink 4 holes down one of the angled columns, then fix this using 4 x 40mm screws.
- iv. Repeat for the other angled column so that there are now two columns on both the left wall panel and the front wall panel.



### 3. Trim

- As the corner model has a 45 degree door the trim must be cut using a powered mitre saw or a hand saw and the mitre block that is supplied with the kit.
- The cornice (19x19) and the skirt(32x9) are the same as the standard saunas. The external top fascia is made from (69x19) See our images below.
- When you cut a mitre you should divide the angle by 2 and cut both pieces of wood at that angle. As the door on our sauna is a 45 degree you must cut both pieces of timber at 22.5°.



- If cutting an internal joint you will never need a larger piece of wood than the distance you have to cut.
- For an external joint you will need more length of timber than the distance you measure.
- We use this rule. If cutting an internal joint cut with your elbow to the opposite and for external cut with your elbow to the same side. e.g for an internal joint the right end of the timber should be cut with your elbow to the left.

